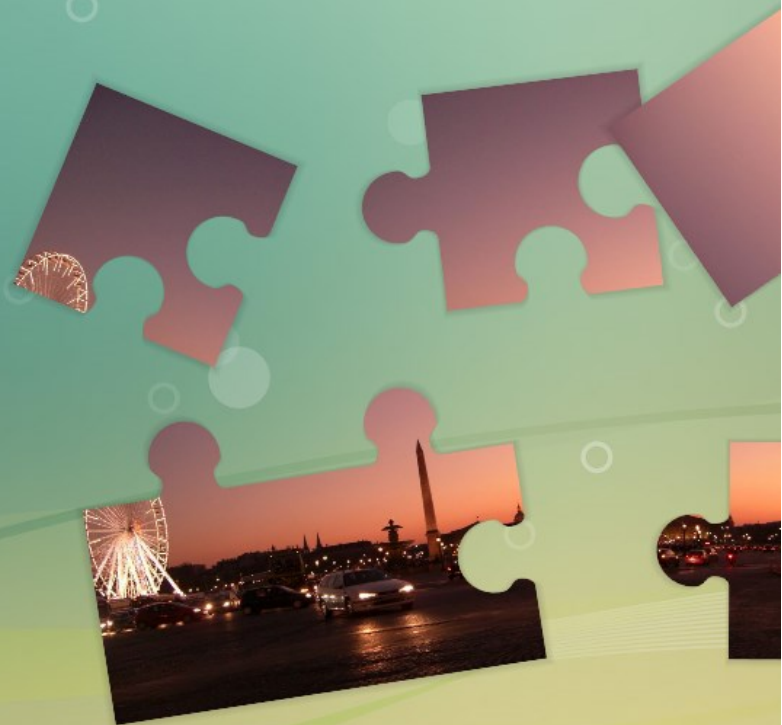




Difficulty

EASY

Puzzle' Touch



1-4 players, all ages

Puzzle' Touch by after-mouse.com 

Bring your family back together!

Puzzle' Touch is a touch-enabled jigsaw puzzle for all ages. An image is chosen from one of several categories and is then turned into a jigsaw on screen. Players use their finger to move the puzzle pieces together so they form the whole picture, displayed on the side as a guide. The game is won when the picture is complete. An entertaining game for children and adults alike, Puzzle' Touch also fosters logic and organizational skills. There are 3 levels of difficulty available.

How to Play

Puzzle'Touch begins with the selection of a category of images. There are several categories available, from animals to flowers to landmarks!



After selecting a category, a stack of images in the selected category will appear to one side of the screen. Players select which individual picture they would like to play with a single tap.

Players can select the difficulty meter at the top to change how many puzzle pieces will need to be assembled.



Image stack

Level of difficulty

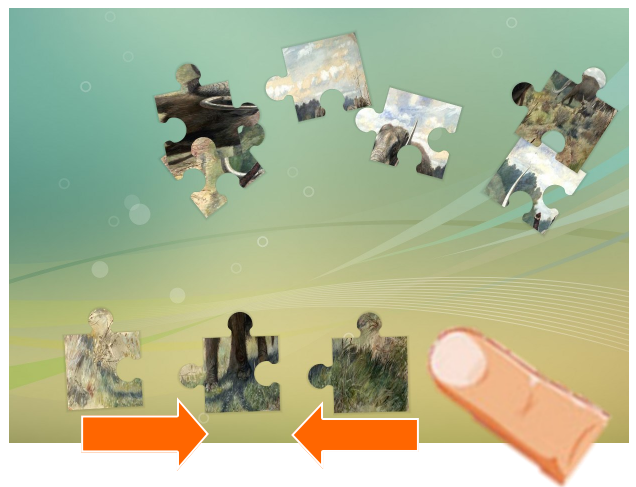


How to Play (Continued)

Players can choose Easy, Medium, or Hard. The difficulty is changed by tapping or sliding along the meter. The easy level is a puzzle with 4 pieces. The medium puzzle has 6 pieces and the Hard has 9.



Even if a puzzle is already on screen, changing the difficulty will update whatever image is being played. The puzzle pieces will be in randomly generated order and orientation on screen.



Players must use their fingers to rotate any pieces that need rotating, and find where they match with other pieces. The photo stack remains on screen as a guide.



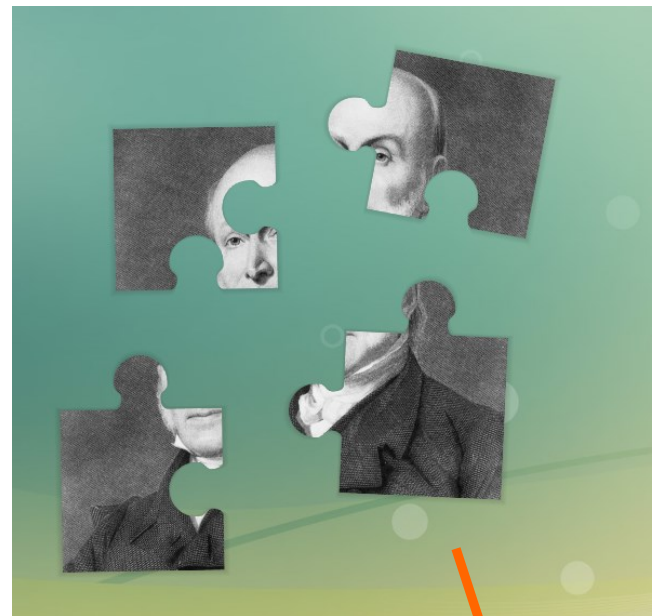
How to Play (Continued)

The puzzle can be put together anywhere on screen, and in any orientation. You can assemble your puzzle upside down if you like!

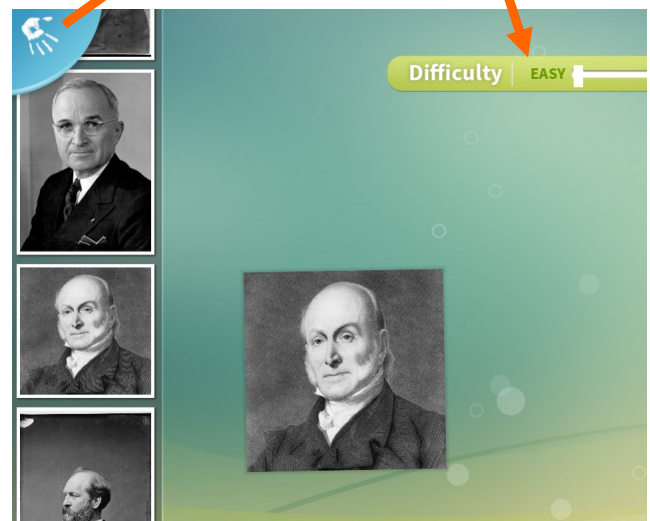


A puzzle is complete as soon as all the pieces are assembled together and it matches the original image. To play again, select a new image from the current stack, or return to the home screen and select a different category of images.

The game is not timed; players can play as many puzzles as they like. Multiple people can help assemble the puzzle together, though only one puzzle will be displayed on screen at a time.



Quit/Options



The game can be exited at any time with the menu button in the corner of the screen.

Customer support

Customer satisfaction is our number one priority at AFTER-MOUSE.COM. If you are having any technical issues with this game, please contact our customer support.

We will have a team member respond to your inquiry as soon as possible!

By email at support-games@after-mouse.com

On our website at <http://www.after-mouse.com/support/upload/>

Thanks for playing!

Frequently asked questions

What are the system requirements to run Puzzle'Touch?

Puzzle'Touch requires a multi-touch device, Dual Core Processor with 2 GB minimum memory, 4 GB recommended memory for optimal speed. Full HD resolution is also recommended for best performance.

What is the recommended age for Puzzle'Touch?

Puzzle'Touch is suitable for children and adults of all ages.

How many people can play Puzzle'Touch?

There is only one image at a time for Puzzle'Touch, but as long as it is played on a multi-touch device, multiple people can play together to complete the puzzle.

How do I change the level of Puzzle'Touch?

There is a difficulty bar at the top of the screen with 3 levels: Easy, Medium, and Hard. Easy puzzles will be assembled from 4 jigsaw pieces, medium puzzles have 6 pieces, and hard puzzles have 9 pieces.

How is the game won?

When all the jigsaw pieces are successfully assembled to complete the selected picture, the player has completed Puzzle'Touch. A new puzzle can be started by selecting a new image either from the current screen or by exiting to the main screen and selecting a different category.

Why are some of the images warped?

The puzzle tile remains the same size regardless what level of difficulty is played. For this reason, an easy puzzle of 4 pieces will be a square when completed—where a medium puzzle with 6 pieces will be a rectangle. This may slightly alter the dimensions of the photos, such that they look a bit stretched.

How do I quit Puzzle'Touch?

Touching the hand icon in the corner will launch the option menu, where you can quit, view instructions, or return to the category page to select from a different set of images.